



# Milpitas City Council Transportation Subcommittee

## Item 5a

**Citywide Traffic Safety Assessment Project, Project No. 4293**

**Travel Safety Plan**

**October 25, 2023**

*City of Milpitas*

455 E. Calaveras Blvd., Milpitas, CA 95035



[www.ci.milpitas.ca.gov](http://www.ci.milpitas.ca.gov)



408-586-3000



# Agenda

- **Milpitas Citywide Travel Safety Plan Introduction**
- **Project Timeline**
- **Crash Data Analysis Results**
- **Public Engagement Summary**
- **Safety Improvements**
- **Questions**

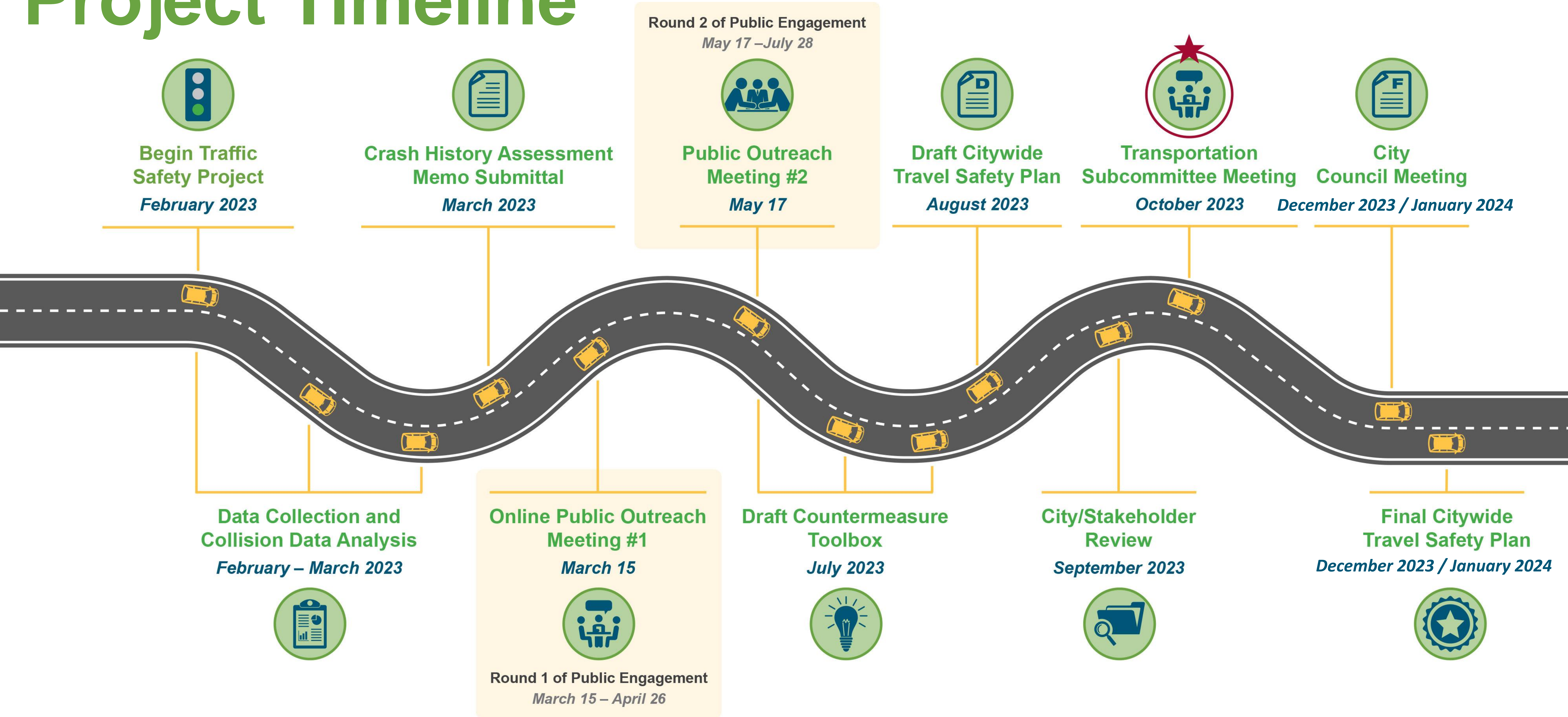


# Milpitas Citywide Travel Safety Plan

- **Objective: Identify traffic safety emphasis areas and improvement strategies based on crash data analysis and community input**
  - Crash data trends
  - High crash locations
  - High risk locations
  - Emphasis areas / case study locations
- **Public engagement**
- **End Products:**
  - Safety Countermeasure Toolbox developed with data-driven industry standard methodologies as required for many grant applications
  - Citywide Traffic Safety Plan
  - Grant eligibility and guidance on grant applications

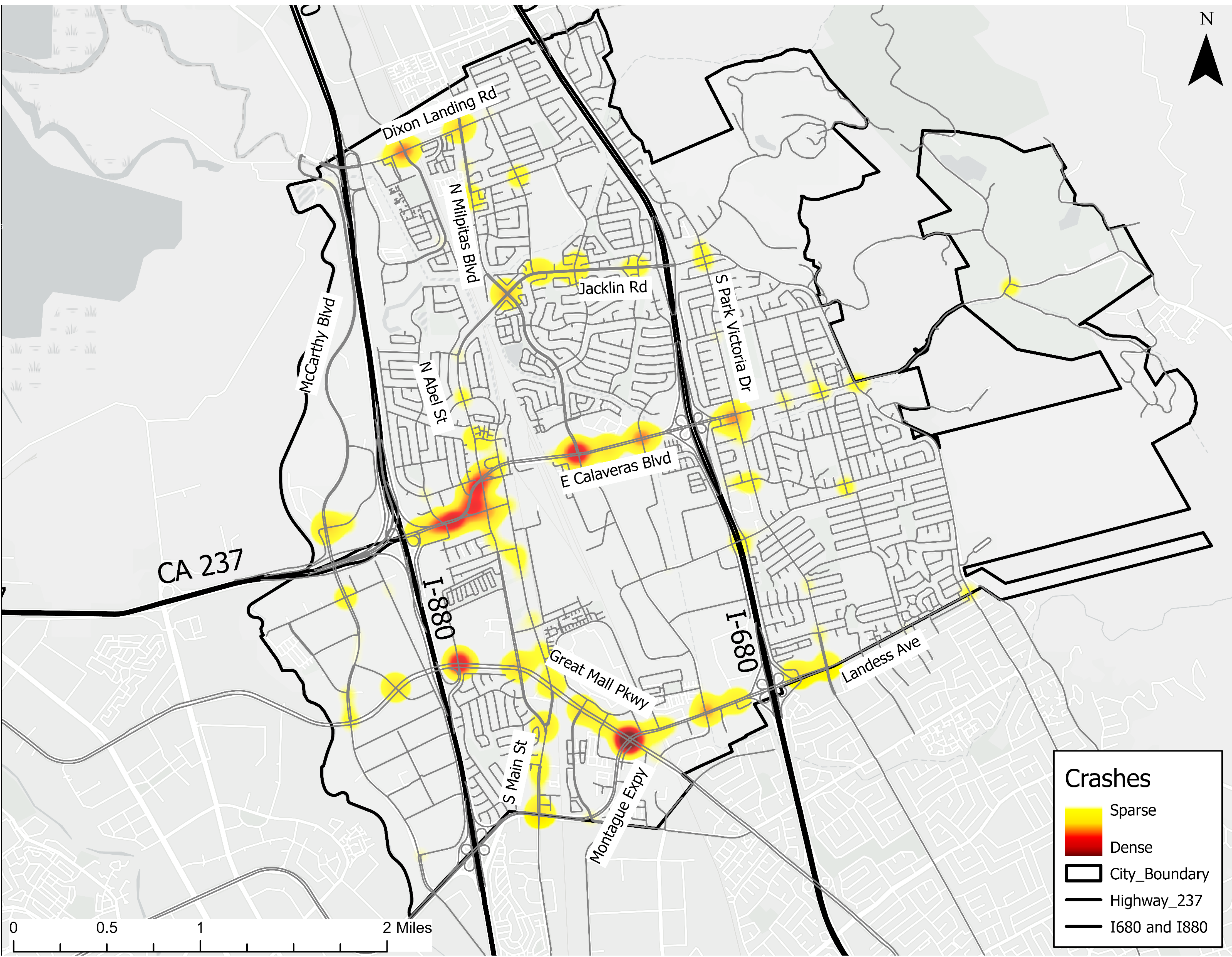


# Project Timeline





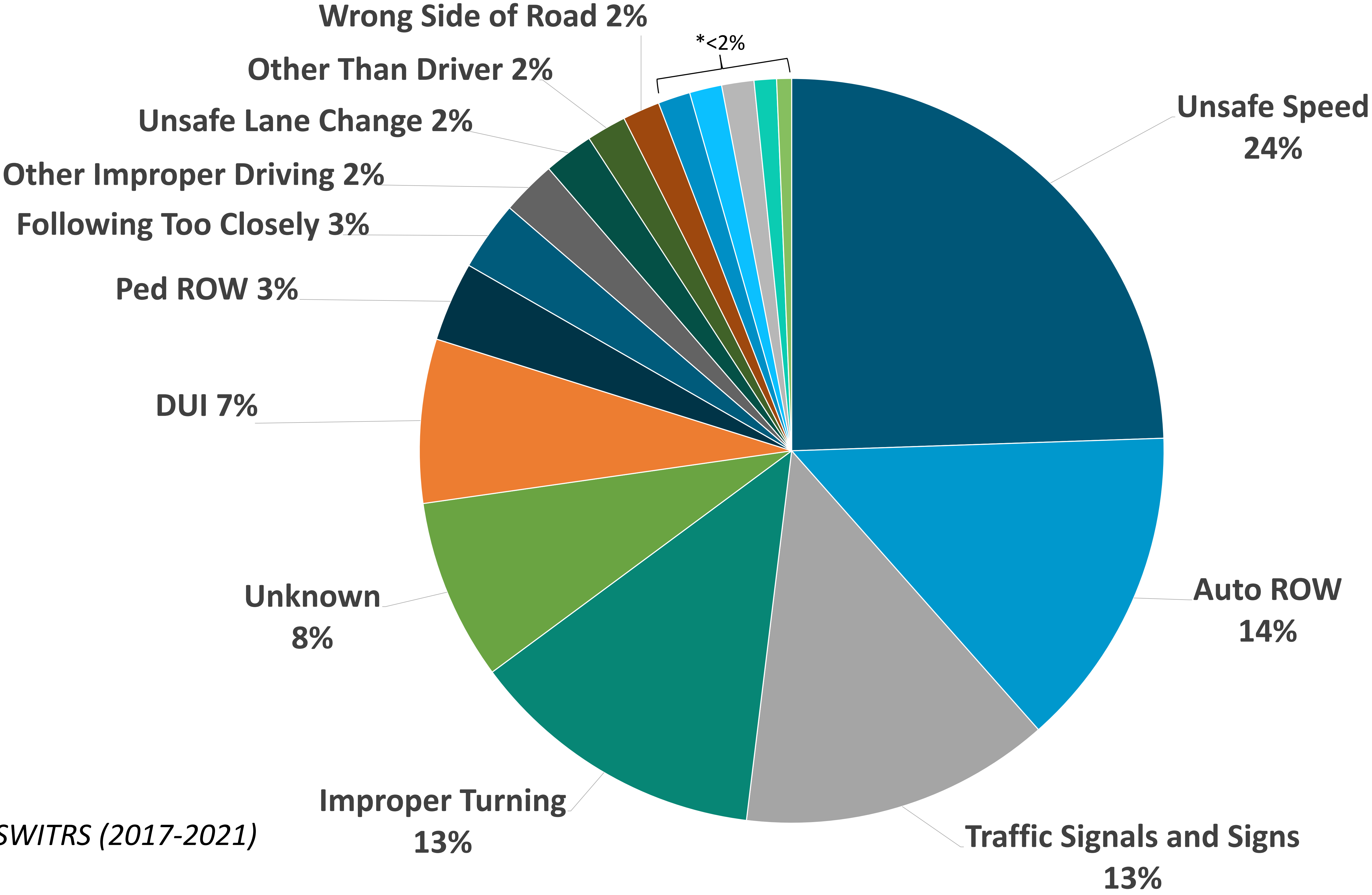
# Citywide Crashes



Source: Statewide Integrated Traffic Records System (SWITRS) 2017-2021



# Primary Collision Factors

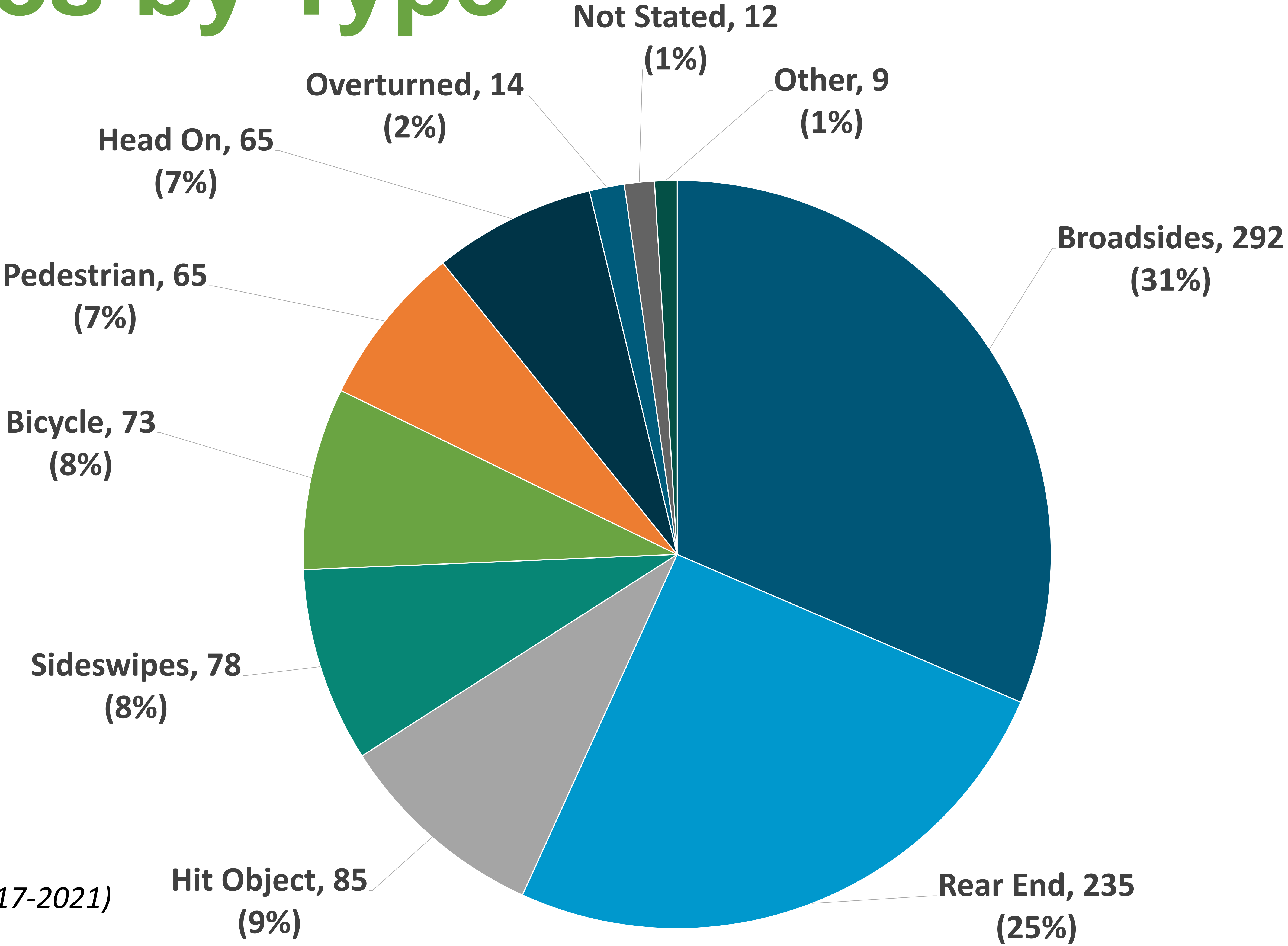


Source: SWITRS (2017-2021)

\*Note: The following each made up <2% of crashes: Other Hazardous Violation, Unsafe Starting or Backing, Not Stated, Pedestrian Violation, Improper Passing



# Crashes by Type



Source: SWITRS (2017-2021)

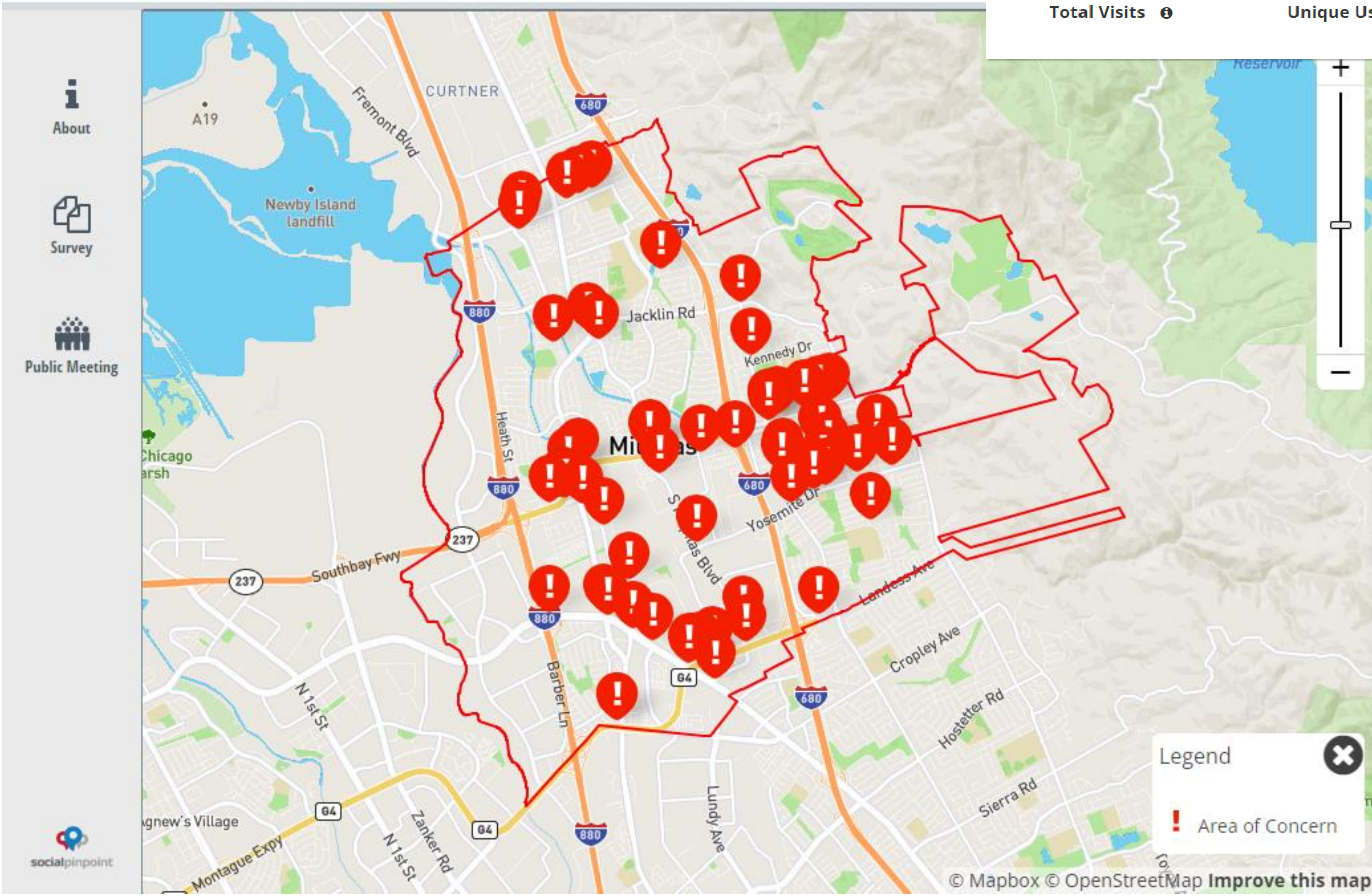


# Public Engagement



Closed for Comment

Engagement Summary					
1052	306	1:55	55	80	98
Total Visits	Unique Users	Avg Time (min)	Unique Stakeholders	Comments	Survey Responses



## Round 1

- **Online Public Meeting** held on March 15, 2023 through Zoom
- **Launch of the first round of online public input**
  - March 15, 2023 - April 28, 2023
  - Milpitas Traffic Safety Survey & Interactive Map hosted on Social Pinpoint

## Round 2

- **In-Person Public Meeting** held at the Milpitas Library on May 17, 2023
- **Promotion of the second round of online public input**
  - May 17, 2023 - July 28, 2023
  - Countermeasure Toolbox Survey & Interactive Map hosted on Social Pinpoint



# Countermeasures: *Non-signalized Intersections*



**INSTALL/UPGRADE SIGNAGE WITH  
RETROREFLECTIVE STRIPS**



Signs with fluorescent retroreflective sheeting provide enhanced visibility and driver awareness



**INSTALL RECTANGULAR RAPID  
FLASHING BEACON**



Enhanced warning to improve motorist yielding to pedestrians



**ADVANCED STOP BAR**



Advanced stop bar enhances pedestrian safety by buffering the space between cars and pedestrians in the crosswalk



# Countermeasures: *Roadway Segments*



## INSTALL RUMBLE STRIPS



Centerline and Edgeline rumble strips provide drivers with an auditory indication and tactile rumble when driven on, alert drivers when they drift out of their travel lane



## INSTALL SEPARATED BIKE LANES



Separating vehicular traffic from bicycles provides cyclists with additional safety and comfort.crashes.



## IMPROVE PAVEMENT FRICTION (HIGH FRICTION SURFACE TREATMENTS)

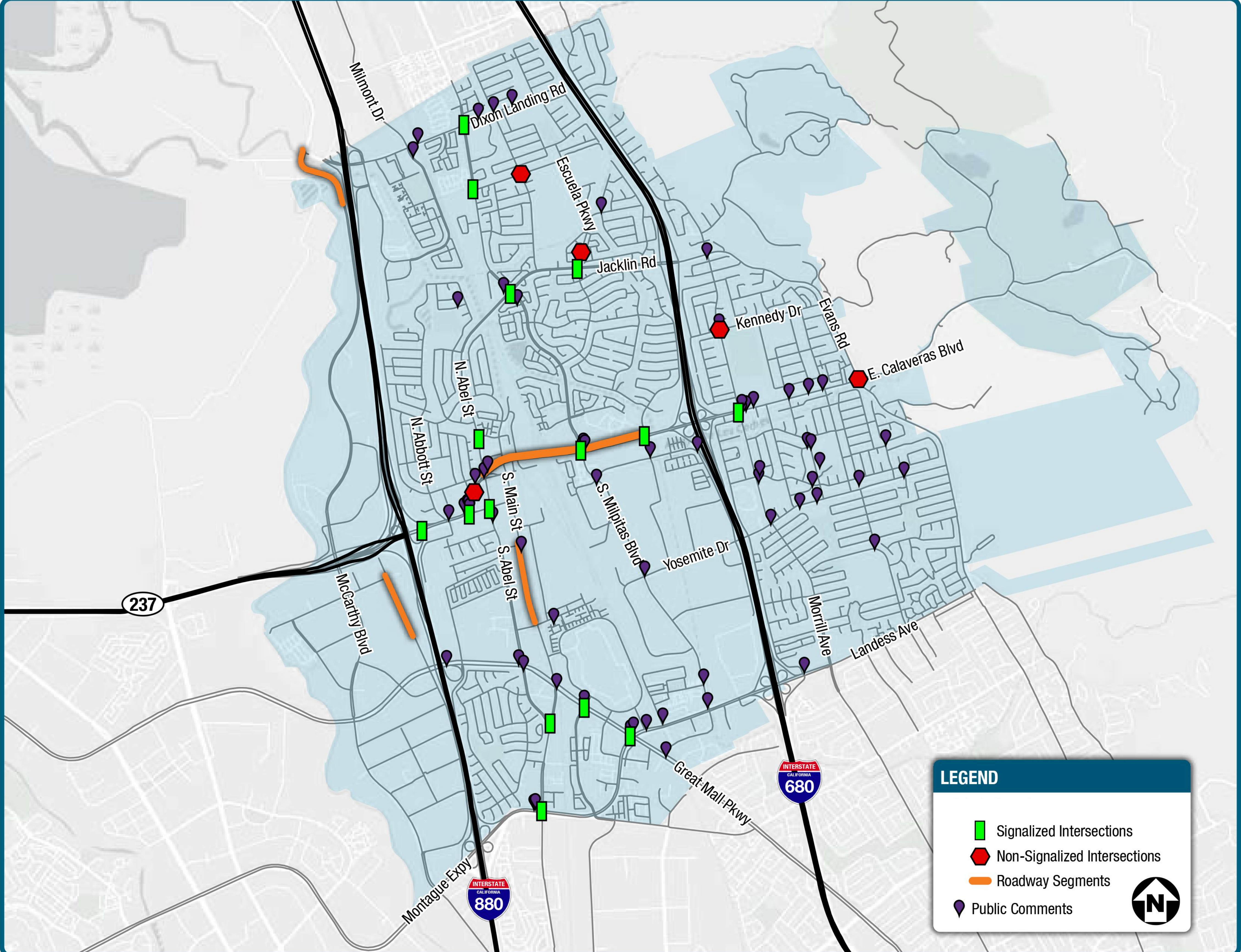


Increases the pavement friction, helping cars grip the road better and avoid lane departure crashes



# Case Study Locations

- Data-driven process
- 25 Locations
- Factors of interest:
  - Severity
  - Crash rate
  - Vulnerable road users
  - Distinct crash trends
  - Proximity to schools

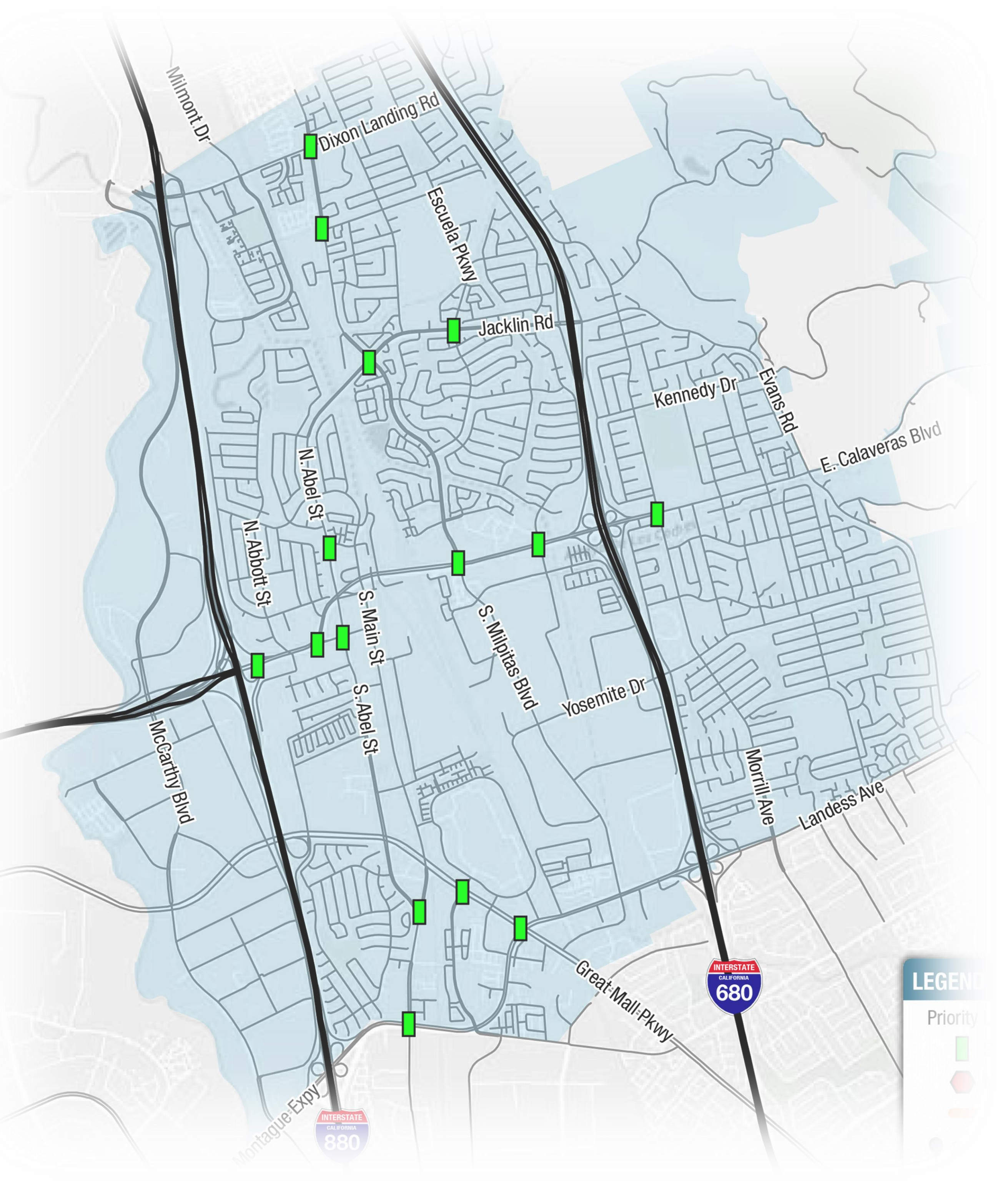




# Case Study Locations

Signalized Intersections	Crashes
Great Mall Pkwy & Montague Expy	35
E Calaveras Blvd & N Milpitas Blvd	21
W Calaveras Blvd & Serra Way	19
E Calaveras Blvd & S Hillview Dr	17
N Milpitas Blvd & N Abel St	14
Dixon Landing Rd & N Milpitas Blvd	13
Serra Way & S Abel St	13
W Calaveras Blvd & I-880 NB Off-Ramp	12

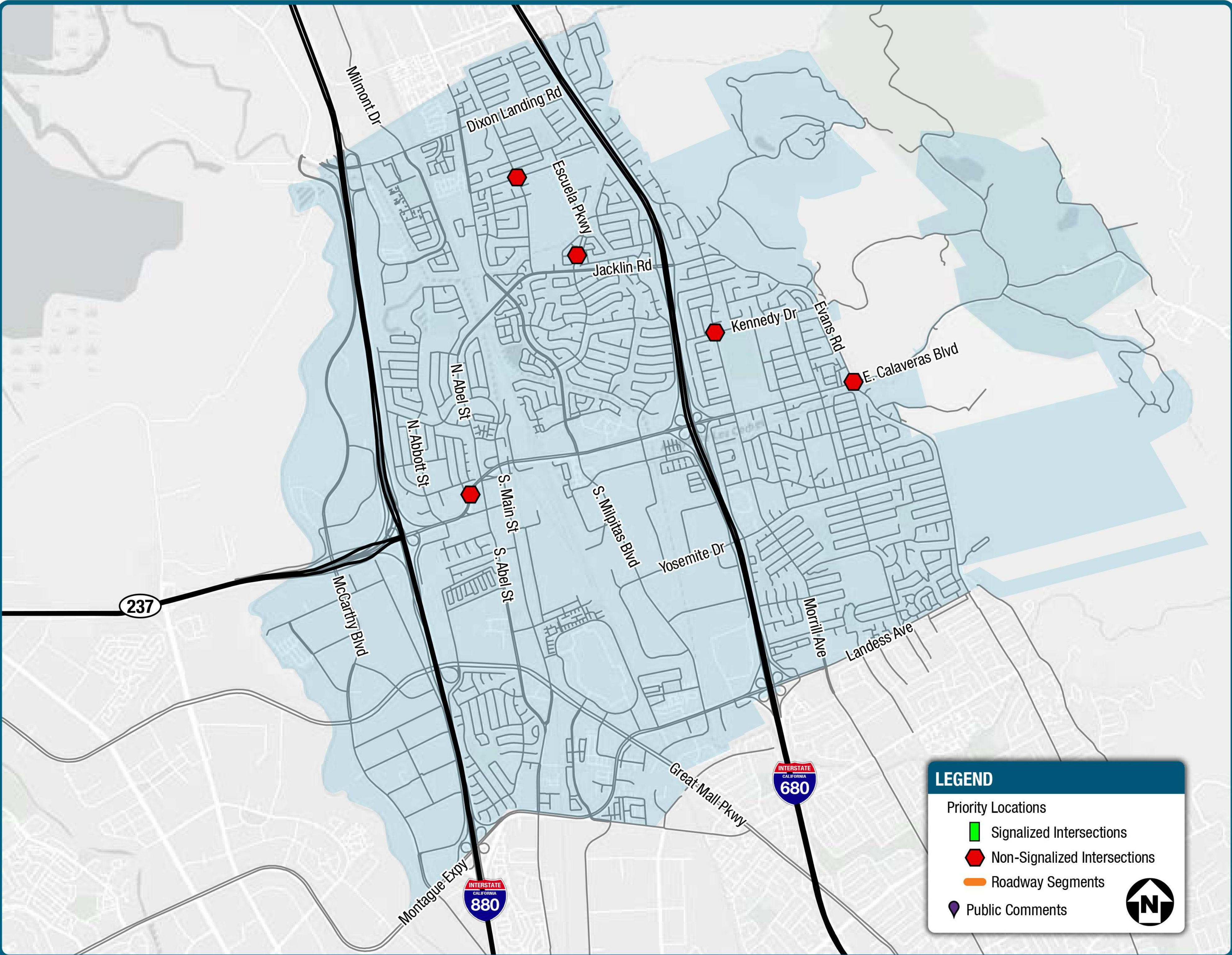
Signalized Intersections	Crashes
Great Mall Pkwy & McCandless Dr	12
S Main St & Montague Expy	11
S Main St & S Abel St	11
Calaveras Rd & S Park Victoria Dr	11
Escuela Pkwy & Jacklin Rd	9
Weller Ln & N Abel St	7
Washington Dr & N Milpitas Blvd	6





# Case Study Locations

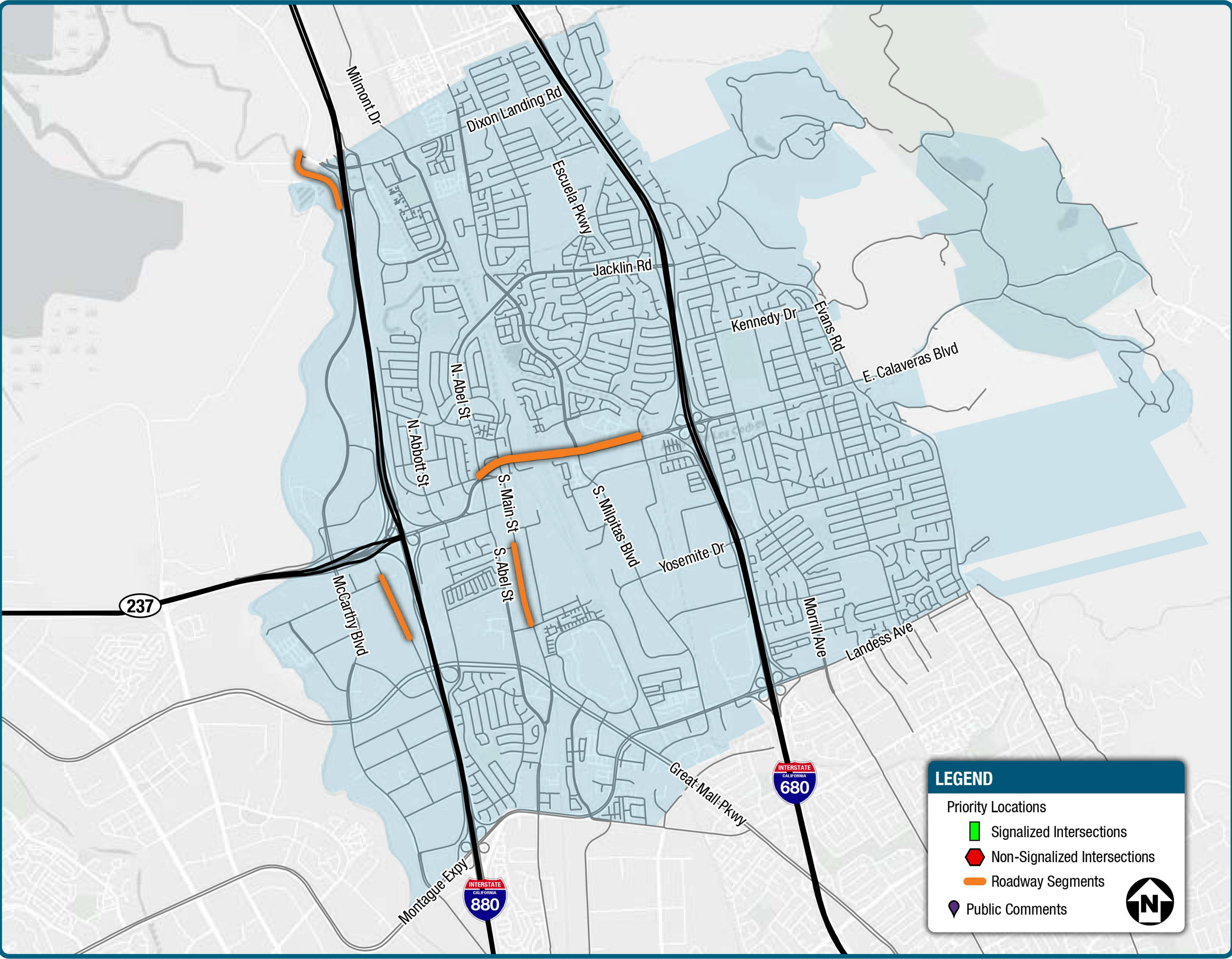
Non-Signalized Intersections	Crashes
W Calaveras Blvd & Butler St	14
Washington Dr & Arizona Ave	6
Altamont Dr & Escuela Pkwy	4
Calaveras Rd & Evans Rd	4
Kennedy Dr & N Park Victoria Dr	3





# Case Study Locations

Roadway Segments	Crashes
E Calaveras Blvd from N Milpitas Blvd to Hillview Dr	14
E Calaveras Blvd from Abel St to N Milpitas Blvd	9
S Main St from W Curtis Ave to Corning Ave	8
S McCarthy Blvd from Dixon Landing Rd to Sprig Center Dwy	6
Barber Ln from Bellew Dr to Alder Dr	3





## Next Steps

- **Finalize Citywide Travel Safety Plan (with Countermeasure Toolbox)**
- **City Council Adoption of Citywide Travel Safety Plan**
- **Utilize countermeasure toolbox to identify safety improvements**
- **Seek grant funding for implementation of case study improvement projects**
- **Monitor crash data following improvements**



# Other Areas of Interest

- **Arizona Avenue at Boulder Street**
  - Review and evaluate location to install additional pedestrian warning signage to increase pedestrian visibility
- **Serra Way at Abel Street**
  - In September, Public Works installed two-way left turn striping to improve traffic flow.
  - Evaluate for additional improvements
- **Piedmont Road**
  - Speed Data collected in July 2022 justifies current posted speed limit (35 mph)
  - Staff to include this segment for deployment of radar speed trailer